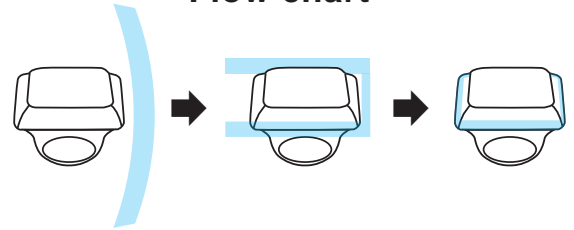


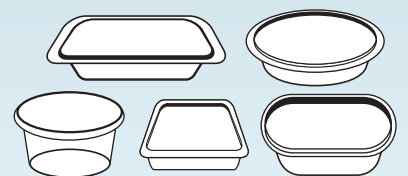
TAMPER EVIDENT BAND SEALER



Flow chart



HA-BA150A-BE



The form of the package

SERIES SPECIFICATION

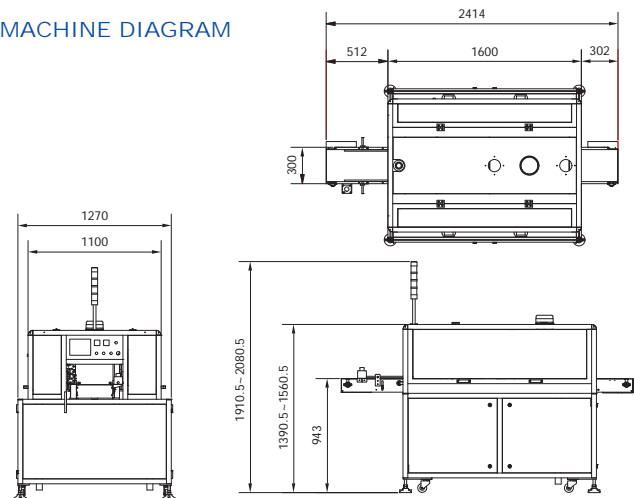
Model Number	UNIT	HA-BA150A-BE	Remarks
Power		3ø 220V, 380V or 415V, 50/60Hz(Customization)	Customization by order
Motor		Servo motor 1HP X 2 AC 60W X 2 90W X 2 AC 180W X 1	
Air	kg/cm ²	5.5 (80psi)	Air volume : 40~60 L/min
Heater	W	0.7KW X 6 0.4KW X 1 90W X 8	Changeable by product or working speed
Packing Speed(Max.)	(BPM)	Max.35	Varied Speed by packaging size or weight
Applicable Material		PET / PLA	PVC film is not recommended, because it will create toxic air to damage machine.
Film Width	mm	38 ~ 150	Can be changed by packaging requirement.
Film Thickness	mm	0.025 ~ 0.07	
Printed Film		Only available for random surface print	
Packaging width	mm	80 ~ 250	
Packaging height	mm	30 ~ 150	The gap between film bottom edge to conveyor belt must be 5mm at least.
Packaging weight (Min.)	g	Min.250	
The form of the package		Light or low container is not recommended.	

Features

- 1.Economical film using can save cost & reduce wastage.
- 2.Belt conveyor design help pack smaller container easily.
- 3.Stainless steel frame can be durable with longer working life.
- 4.To pack multiple sizes containers without needing adjust machine.

- Our packaging specialists will provide you the most efficient and energy-saving packaging system for your products.
- All specifications, design and characteristics shown on this catalogue are subject to change without prior notice.

MACHINE DIAGRAM



Halco Packaging ApS
 Viborgvej 97A
 DK-7400 Herning
 T: +45 75 10 27 44
 E: salg@halco.dk