

AV30

Vertical Cartoning Machine

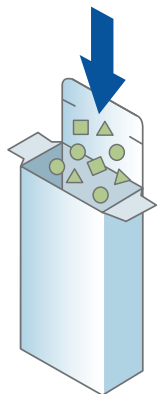


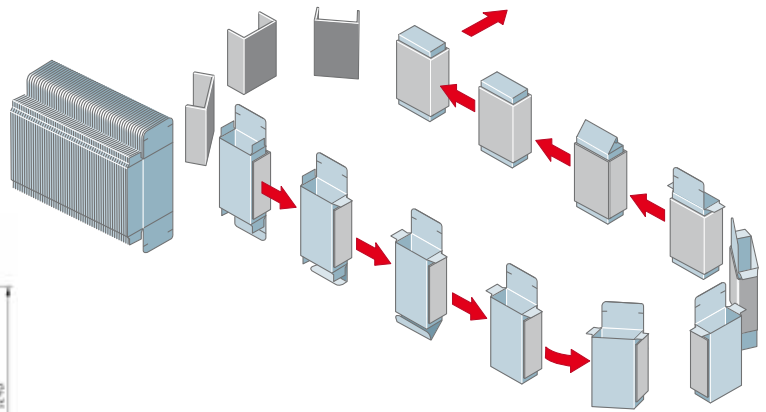
The **AV30** is a top-load, intermittent motion cartoning machine suitable for manual or automatic packaging of pharmaceutical, nutraceutical, cosmetic and food products into pre-glued cartons.

It features positive carton pick-up and forming, with controlled carton transportation based on coated clips to secure carton grip and eliminate the risk of marking on components.

The machine is straightforward to operate and maintain, with fast changeover mainly based on adjustments and replacing of the carton transportation clips (tool-less operation). It can allocate a 3-operator or extended 5-operator manual loading area.

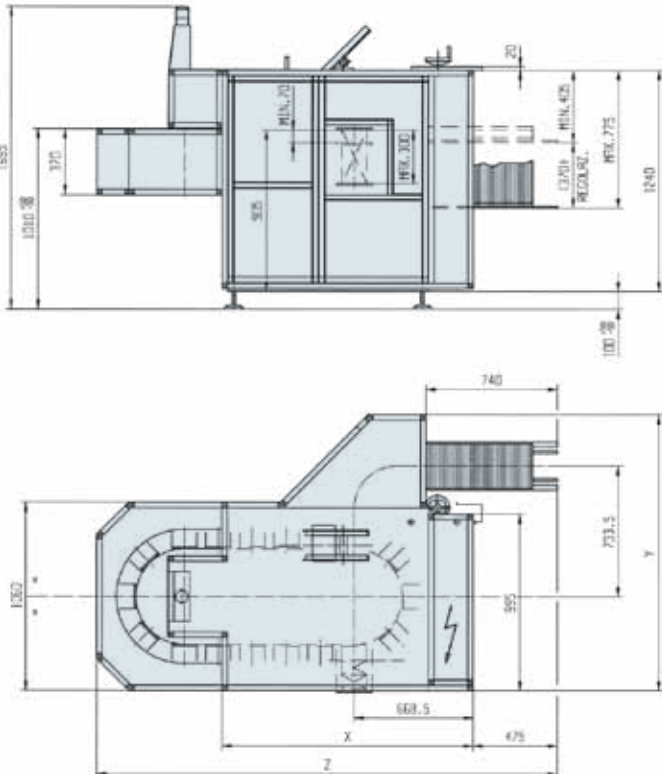
Tuck-in, hot melt or a combination of tuck-in and hot melt (tamper evident) flap closures are available.





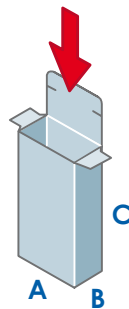
The machine can arrange:

- Casters for portability;
- Automatic feeding systems for round/shaped glass or plastic bottles, jars, sachets, coffee pods/capsules, others;
- Pre-folded leaflets and booklet dispensers;
- Leaflet folding units (GUK);
- Barcode reading systems;
- Ink/emboss coding units or inkjet, printers;
- Remote connectivity.



	X (mm)	Y (mm)	Z (mm)
AV30/124	1410	1550	2200
AV30/131	1410	1550	2590
AV30/132	1600	1600	2900
AV30/136	1410	1550	3350

Technical Data



	A (mm)	B (mm)	C (mm)
AV30/124	15 ÷ 150	15 ÷ 120	55 ÷ 300
AV30/131	15 ÷ 150	15 ÷ 120	55 ÷ 300
AV30/132	15 ÷ 200	15 ÷ 120	70 ÷ 300
AV30/136	15 ÷ 150	15 ÷ 120	55 ÷ 300

	AV30/124	AV30/131	AV30/132	AV30/136
Mechanical output	50 carton/min	50 carton/min	50 carton/min	50 carton/min
Product loading stations	14	18	16	26
Power supply	230÷400V - 50Hz	230÷400V - 50Hz	230÷400V - 50Hz	230÷400V - 50Hz
Installed power				
Hot melt closure	6.5 kW	6.5 kW	6.5 kW	7 kW
Tuck-in closure	1.5 kW	1.5 kW	2 kW	2 kW
Max. air consumption	200 NI/min	200 NI/min	200 NI/min	200 NI/min
Changeover time	15 min	20 min	20 min	25 min
Approx. weight	700 kg	800 kg	900 kg	1,200 kg